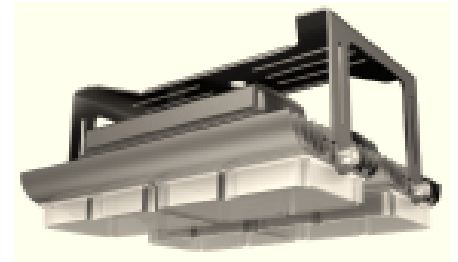


HANGZHOU SHUONENG IMPORT & EXPORT CO., LTD

CL-HB SERIES LED HIGH BAY LIGHT



Features:

- Energy saving and environmental protection: more than 70% energy saving than traditional high bay; Do not contain mercury, no ultraviolet radiation, low light body temperature reducing the quantity of heat discharge; More than 5 years' service life.
- System integration design (lamp shell work as radiator): fully guarantee the needs of LED heat conductivity, cooling needs and long service life.
- Large cooling area: ensure the section temperature of LED, $T_j < 50^\circ\text{C}$ when T_a at 25°C .
- Unique optical design: make the LED illumination distribution more even.
- High reliability of LED, all use CREE chip
- High brightness LED and high luminous efficiency: LED flux ≥ 110 lm/w; lamps efficiency $\geq 85\%$.
- CRI $> 80\%$: make the lighting area and equipments more clearly.
- Optional color temperature: meet different requirements of the color temperature.
- High efficiency ballast: driver efficiency $\geq 92\%$; PF ≥ 0.98 ; THD $\leq 10\%$; no power grid contamination; wide working voltage 80-265VAC, 40-60Hz.
- Power adopts temperature compensation constant current technology: make LED high bay without delay process and flash brightness problems.

Application:

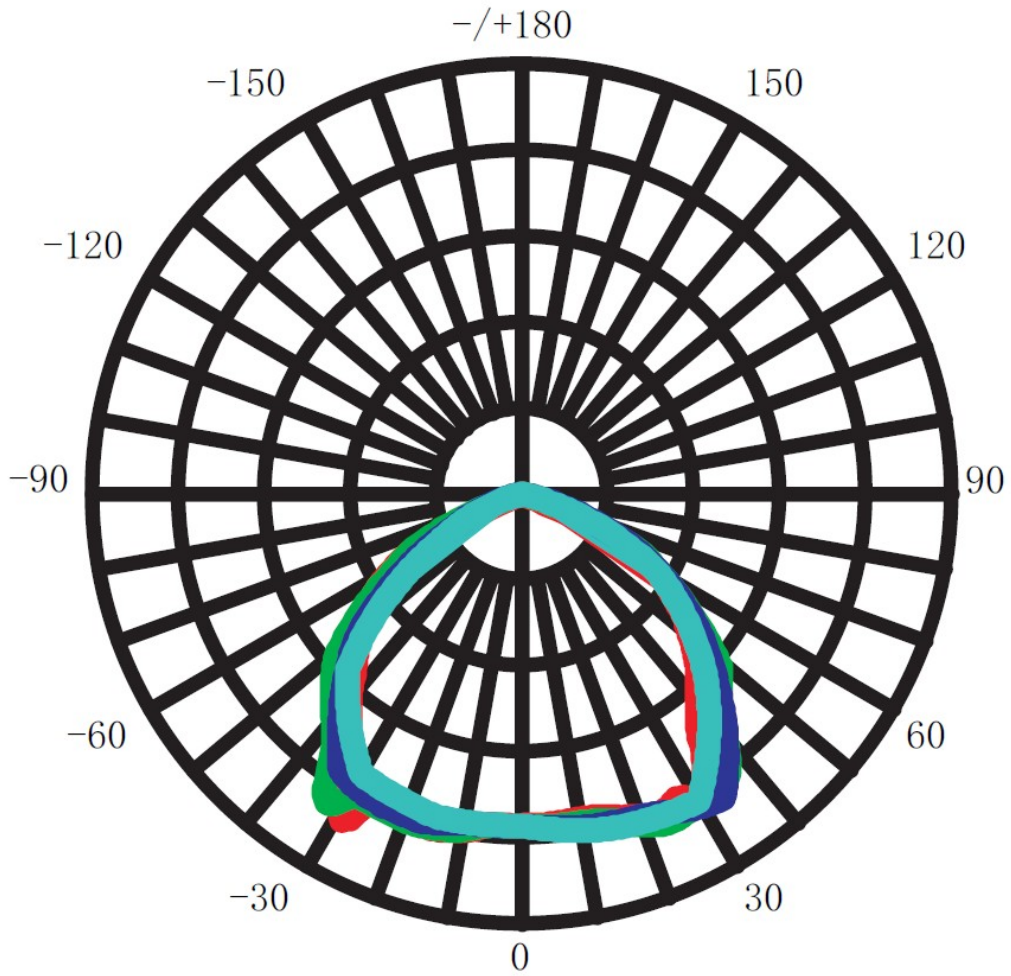
Widely used in factory warehouse and other high brightness led lighting etc.

Technical Data:

Technical Data

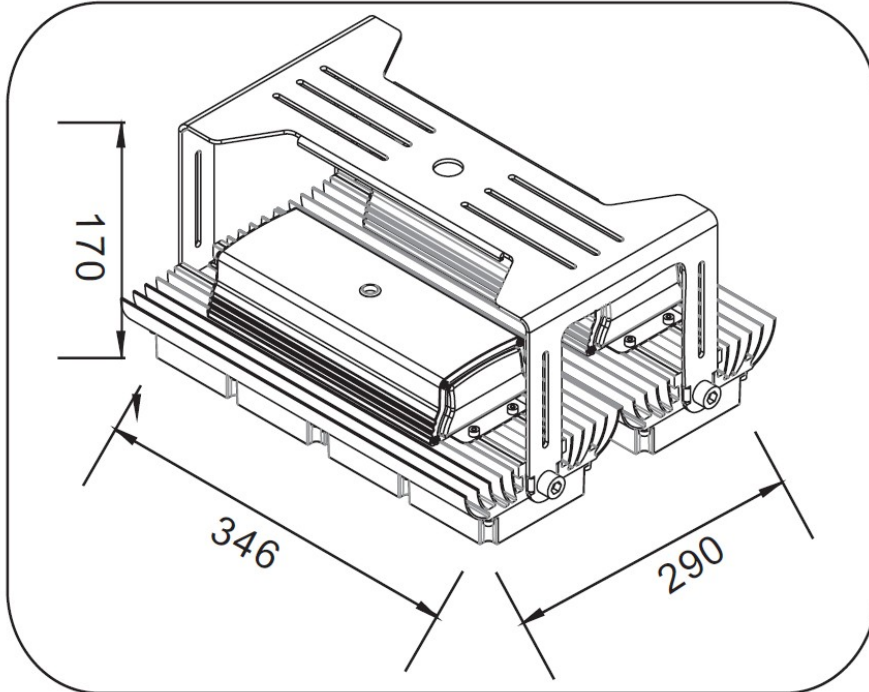
Model No.	CL-HB-A60	CL-HB-A90	CL-HB-A120	CL-HB-A180
Type	High bay lights	High bay lights	High bay lights	High bay lights
Led QTY	182pcs	273pcs	364pcs	546pcs
Type	SMD 5630	SMD 5630	SMD 5630	SMD 5630
Input voltage	AC90-265V	AC90-265V	AC90-265V	AC90-265V
Wattage	60W	90W	120W	180W
Luminous Flux(LM)	4800-5400LM	7200-8100LM	9600-10800LM	14400-16200LM
Material	AL	AL	AL	AL
Frequency	50-60Hz	50-60Hz	50-60Hz	50-60Hz
Efficiency	>88%	>90%	>92%	>92%
PF	>0.94	>0.92	>0.94	>0.94
IP	65	65	65	65
C.R.I	75	75	75	75
Color Temperature (K)	2700-6500K	2700-6500K	2700-6500K	2700-6500K
Beam Angle	90°	90°	90°	90°
Demension(D×H)mm	346*145*170mm	508*145*170mm	346*290*170mm	508*290*170mm
Working Temp.	-20~+45℃	-20~+45℃	-20~+45℃	-20~+45℃
Weight	2971g	4200g	5940g	8400g
Warranty	3 years	3 years	3 years	3 years
MOQ	100pcs	100pcs	100pcs	100pcs

LIGHTING CURVE:

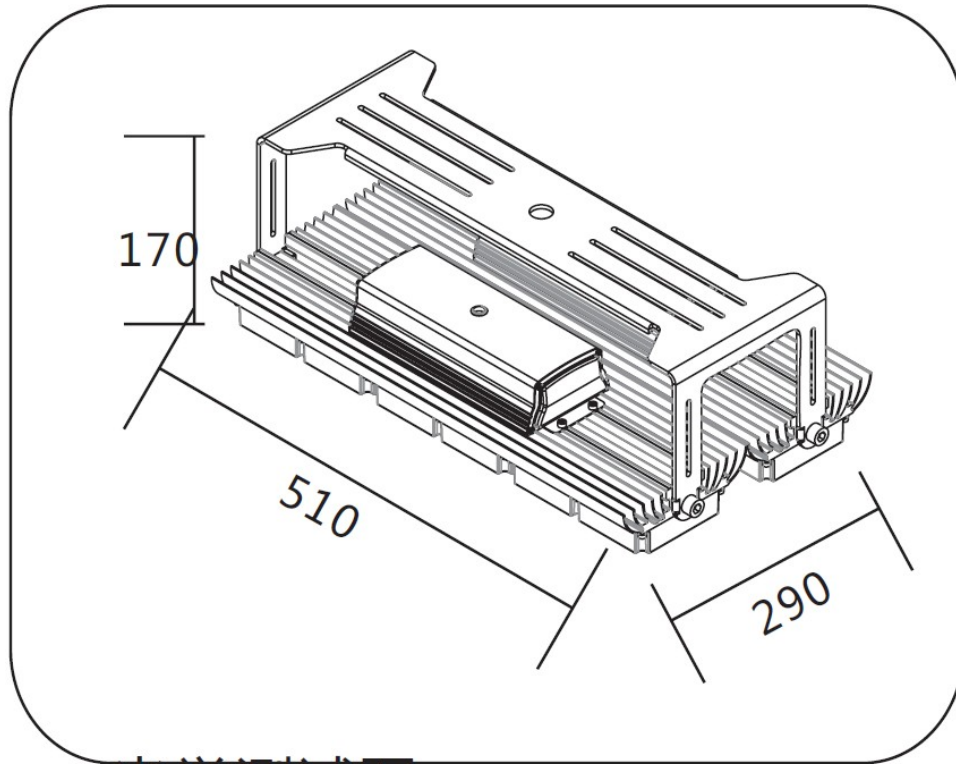


LAMP SIZE:

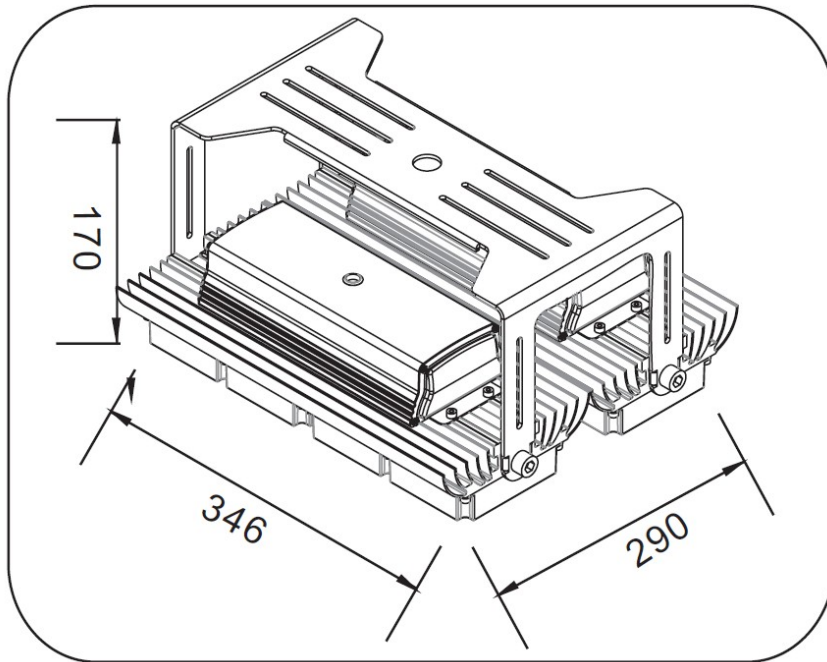
CL-HB-A60



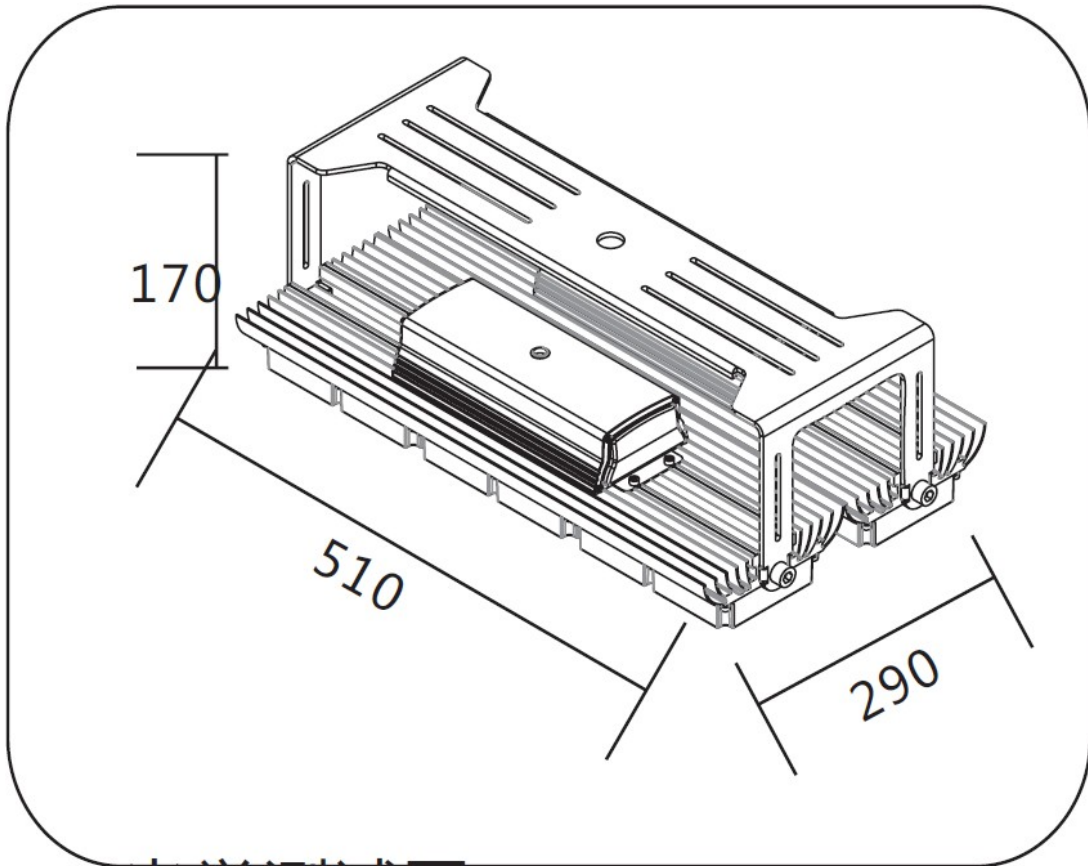
CL-HB-A90



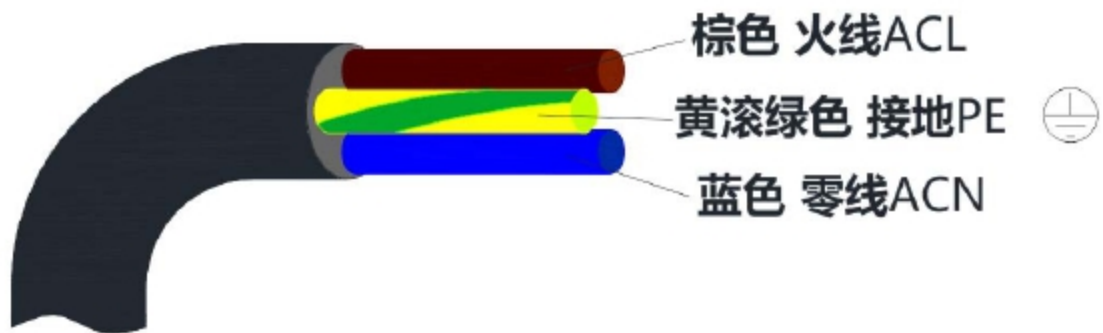
CL-HB-A120



CL-HB-A180



Wiring Diagram:



Installation Instruction:

- 1、 Install the lamp on the fixed bracket and tighten the screws;
- 2、 Adjust luminous surface and tighten the screws according to lighting requirement. ;
- 3、 wiring the line according to wiring schematics;
- 4、 The light can work properly with switch on;

Maintenance Method:

- 1、 To keep the lighting effect, please clean the lamp once within half year. You had better using soft cleaning cloth with soap-suds first, then dry it. ;
- 2、 Do not clean the surface of lamp with the volatile fluid like banana oil; do not spray any chemicals on lamp surface, otherwise color change or damage to lamp will happen. ;

Note:

- 1、 Please read the manual carefully before installation ;
- 2、 Do not install the lamp at the places which are prone to decay, combustion and explosion ;
- 3、 The lamp should only be used with protection screen. ;
- 4、 The lamp is fixed by screws, and make sure the twisted distance >17N.m to keep safe working ;
- 5、 As output end of lamp interior is flexible cord which cannot be dismantled or installed, using Y connection mode, only manufacturer or professionals designated by manufacturer could change flexible cord in order to avoid dangerous situations ;
- 6、 Please ensure all connection correct before use in order to avoid breakdown ;
- 7、 Only professionals are allowed to install, dismantle or repair ;
- 8、 Do not let lamp body collide or fall off to keep IP degree ;
- 9、 Be careful when you install or carry the products.

Packing information

MODEL	NW(g)	GW(g)	PACKING SIZE(mm)
CL-HB-A60	2910	3100	360x160x190
CL-HB-A90	4410	4710	530x160x190
CL-HB-A120	5940	6300	360x310x190
CL-HB-A180	8800	9200	520x310x190