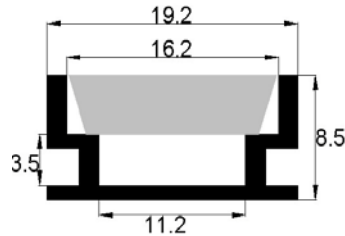


LED Aluminum Profile Application

(1) MS-P1908

Aluminum picture



Application : This profile is embedded type most often used to install LED lights on the street or in areas where there is a risk of moisture ingress. It can be a space near the pool, in the intervals of terrace boards in paving tile, granite and ceramic plates, etc.



The main difference from other types of profiles, it is massive and durable light diffusing screen, which is mounted with a special sealant . This profile is best protects the LEDs from moisture and mechanical damage.



- Screen (transparent ,milk)



- End caps (pair: one with a hole for the cable, the second - the deaf)



(2) MS-P1506

Aluminum picture



This aluminum profile type applicator, although it can be used, including, as a mortise



Its scope is limited only by your imagination.

The profile can be activated to create decorative glowing bands in the walls, ceiling, floor, lights, work surfaces, shelves, steps, niches, front lighting glass or acrylic, etc.



Our company this profile was first used, and is now frequently used for architectural lighting contour. His inner size is ideal for LED strip with protection degree IP-68.



Screen (Transparent or milk)



- End Caps (pair: one with a hole for the cable, the second - the deaf)



- Fixing clips



(3) MS-P2206

Aluminum picture



This aluminum profile flush mount

Application : one of the most popular models profiles

It is designed to tie-in furniture, shelves, drywall, wooden partitions, etc., as shown in the example



The profile can be activated to create decorative luminescent bands in the walls, ceiling, floor, lights, work surfaces, shelves, steps, niches.



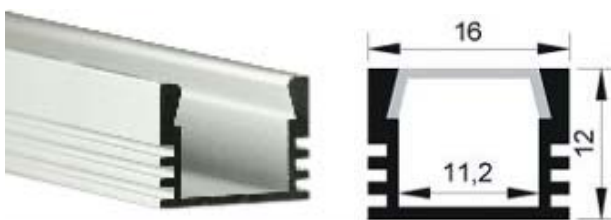
- Screen (Transparent or milk)



- Silencers (pair: one with a hole for the cable, the second - the deaf)



(4) MS-P1612

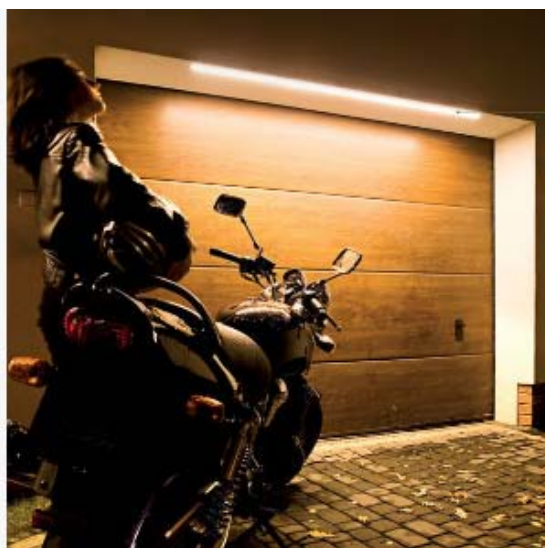


This aluminum profile can be as mortise and overhead

LED profile MS-P1612 is virtually identical to the profile of the MS-P1506.

The only difference – installation depth LEDs.

When installed in this profile LED strip SMD 3528-120 using milk screen - you will achieve is a uniform line of light, without the effect of a point.



- Screen (Transparent or milk)



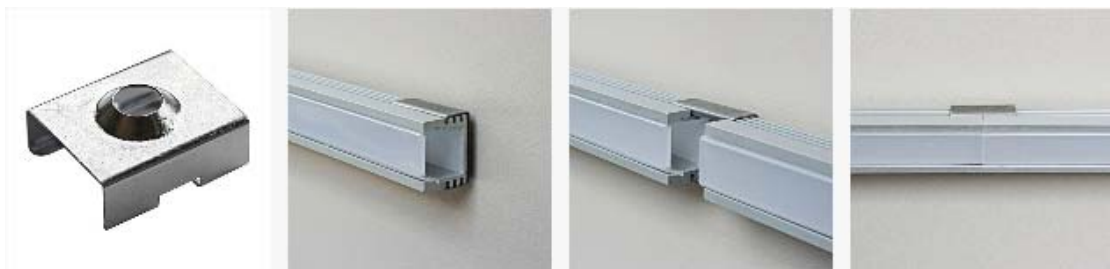
Plugs (pair: one with a hole for the cable, the second - the deaf)



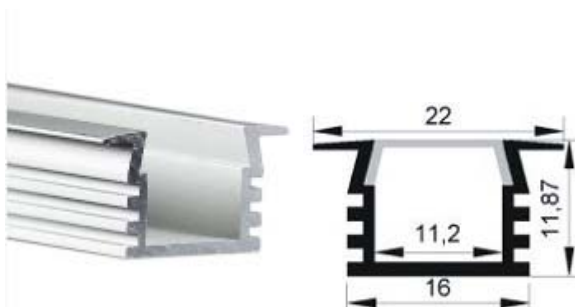
Plug (for transmitting power goes directly to the LEDs)



fixing clips



(5) MS-P2212



Deep mortise profile, allowing you to create bands of light with uniform illumination without points.

Embedded in this profile walls, ceiling, floor, furniture, you can create a stunning and unique interior design.



The interior and exterior, the product profile of MS-P2212 can perform as a decorative function, and the function of basic lighting.



Screen (transparent or milk)



Plugs (pair: one with a hole for the cable, the second - the deaf)



(6)MS-P1818



LP1818 - is a deep profile of a circular shape, which is most commonly used for the manufacture of linear LED fixtures on suspensions, stretching and stuff.



Fixtures of this profile are incredibly comfortable to illuminate paintings in galleries and exhibitions.

Profile P1818 is often used for the manufacture of the main lighting fixtures main offices and administrative offices.

A round profile often finds its application in furniture manufacturing, advertising and architecture.



Exclusive products from Profile



The interior and exterior, the product profile of LP1818 can perform as a decorative function, and the function of basic lighting.

Screen (transparent or milk)



Plugs (pair: one with a hole for the cable, the second - the deaf)



Plug jig (for transmitting power goes directly to the LEDs)



Fixing clips



(8)MS-P1919



Designed for mounting the LED light source at an angle of 45 degrees with respect to the mounting surface, which allows to effectively use light. Profile directs the light beam to the object illumination and prevents it in people's eyes.

Steam is often used to illuminate the shopping marts, especially showcases jewelry stores, furniture for illumination, and sometimes, in the interior illumination.



MS-P1919 used for the production of lamps for the lighting of the gallery of paintings and other exhibits.

Screen (transparent or milk)



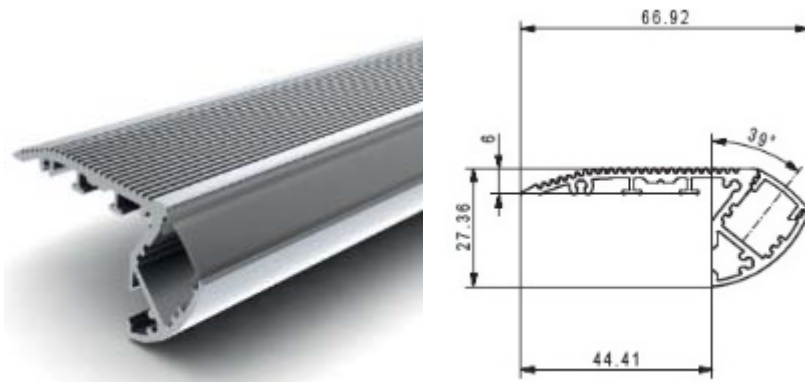
Plugs (pair: one with a hole for the cable, the second - the deaf)



fastening clips



(9)MS-P6628



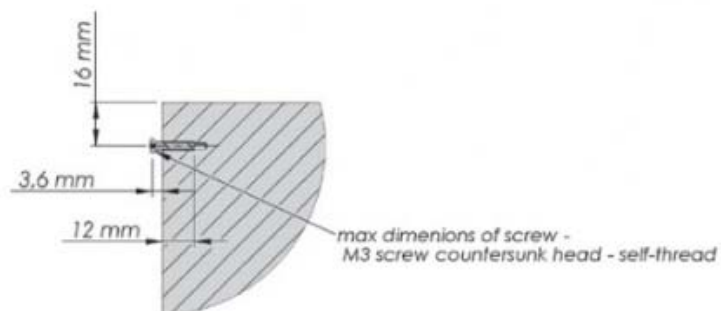
This is a specialized profile designed to illuminate the steps in cinemas, nightclubs and many other sites



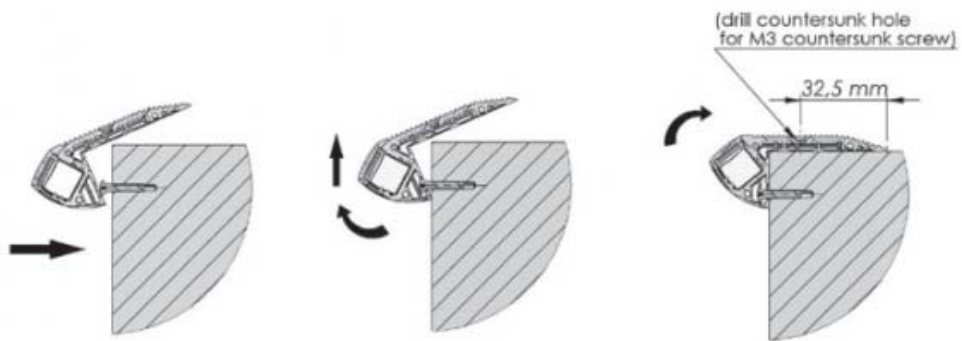
Wiring Diagram

ALU-STAIR mount

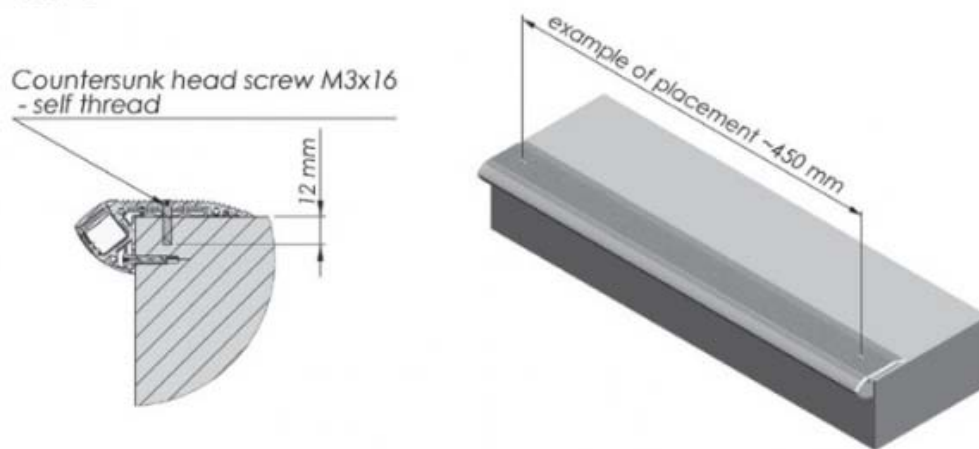
STEP 1



STEP 2



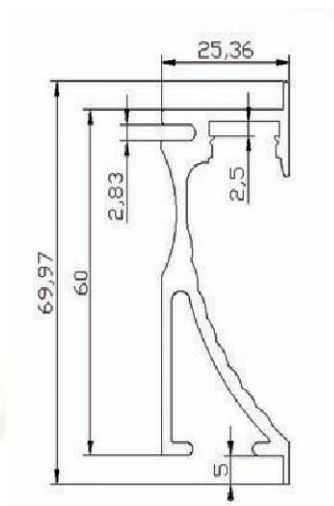
STEP 3



Light diffusing screen and plugs



(9) MS-P7026



This profile can be considered a boon for the designer. It allows you to create a lighting directly inside the wall or other surface. The effect is simply stunning

Supplied 1, 2 or 3 meter complete with diffuser.

Available production fixtures, the parameters of the customer





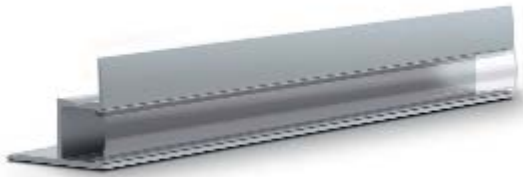
Options:



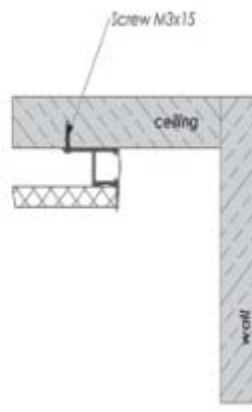
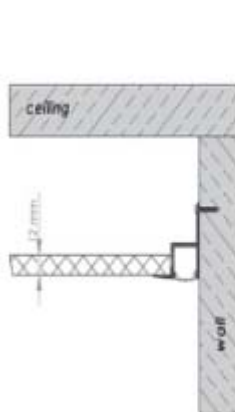
Plugs (pair: one with a hole for the cable, the second - the deaf)

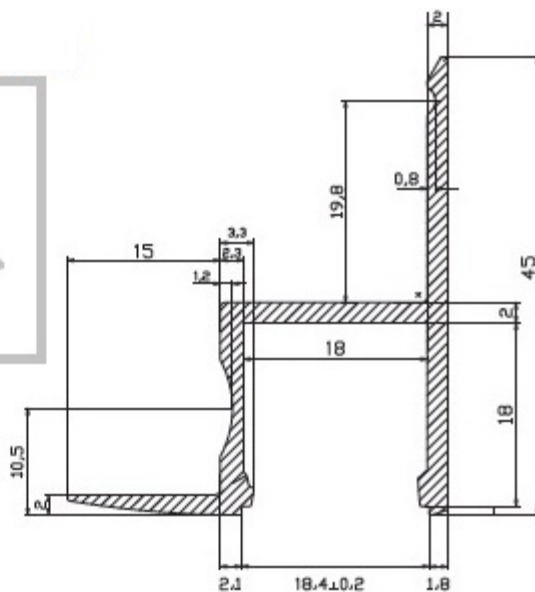


(10)MS-P4538



This profile type, mainly used for mounting in corners of rooms and create a beautiful contour lighting or main LED lighting.

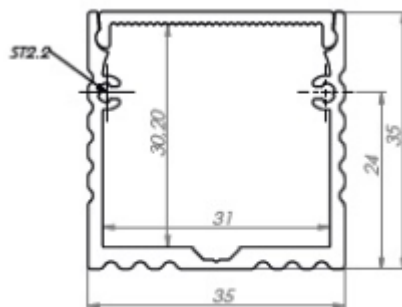




light diffusing screen



(11) MS-P3535



This profile is used to create a decorative or general lighting.

Supplied 2 or 3 meter complete with diffuser.

Available production fixtures, the parameters of the customer. It may be light, like mortise and overhead, as well as suspended

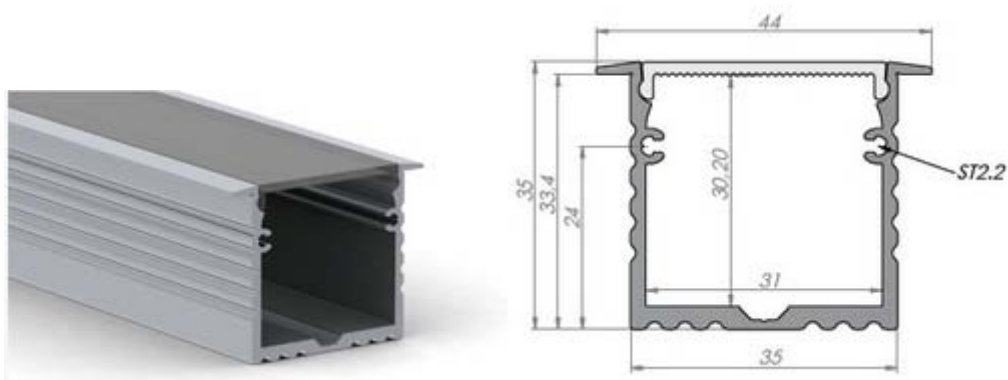


Light diffusing screen and plugs



(12) MS-P3535B

Aluminum Pictures



This mortise profile used to create or deokrativnogo main lighting.

Supplied louver 2 or 3 meter complete with diffuser.

Available production fixtures, the parameters of the customer

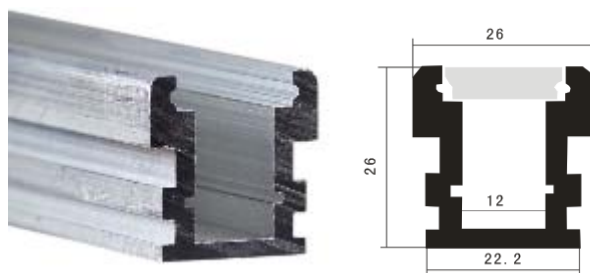


Light diffusing screen and plugs



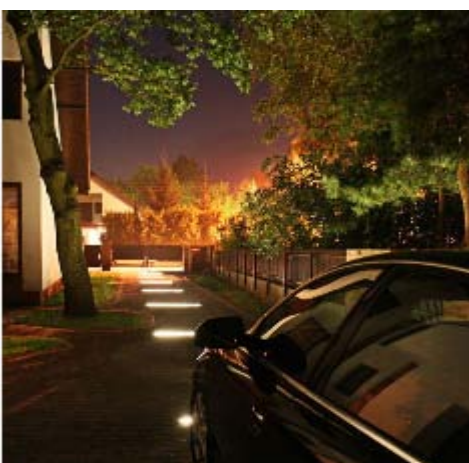
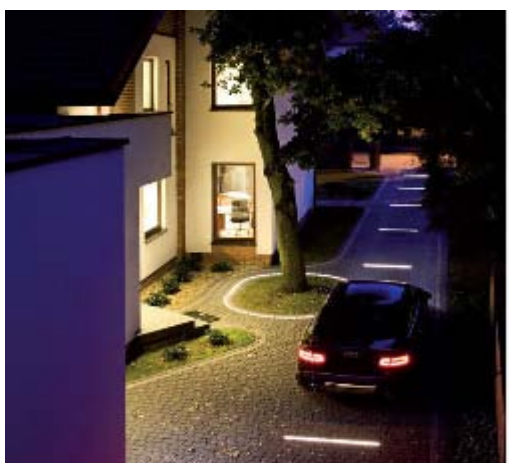
(13) MS-P2626

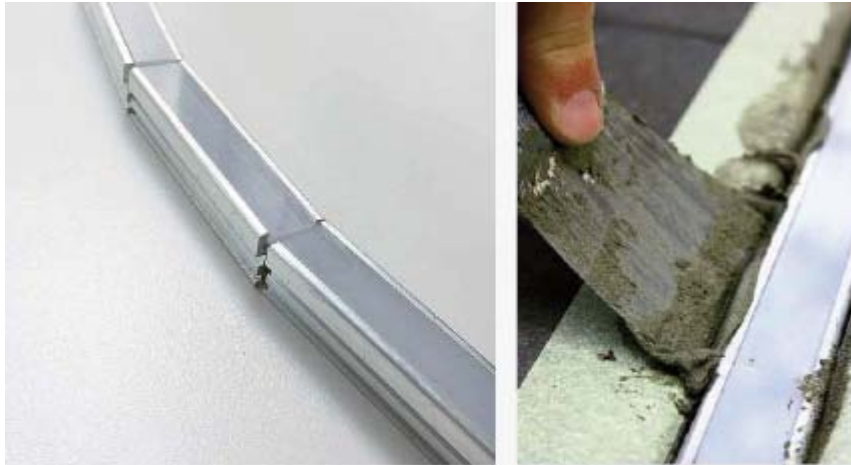
Aluminum Pictures :



Unique profile P2626 is ideal for mounting underground . There is no better solution to install lighting in the parking . It can be installed in a space near the pool , in the intervals of terrace boards in paving tiles , granite and ceramic plates , etc.

The main difference between the profile of P1908, from other types of profiles , it is massive and durable light diffusing screen, which is mounted with a special sealant (sealant name , we strongly recommend to learn from employees MSD Light). This profile is best protects the LEDs from moisture and mechanical damage.





--PC Cover : Milk

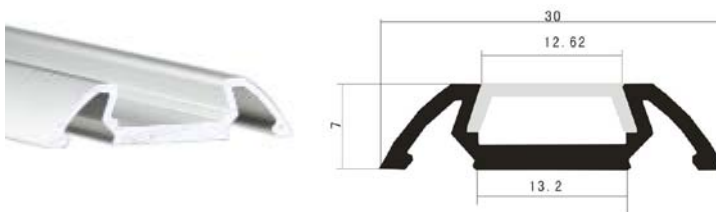


--End Caps :



(14) MS-P3006

Aluminum pictures



Profile P3006 Surface-profile type. Used for all sorts of highlights, but mainly for the conditional separation zones or interior spaces.

Can be mounted on shelves, furniture, walls, floors, etc.



PC Cover : transparent ,diffuse ,milk optional

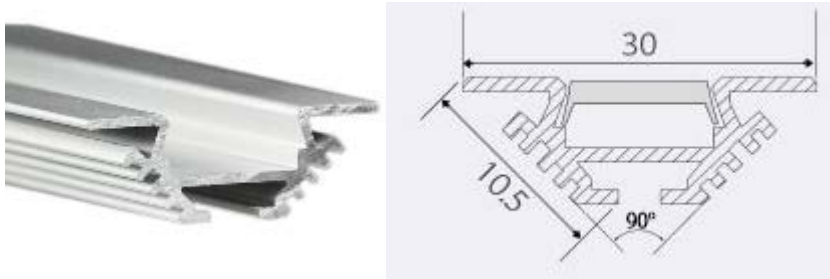


End Caps (pair: one with a hole for the cable, the second - the deaf)



(15) MS-P3010

Aluminum Pictures



Profile angled mounting P3010, is mainly used to illuminate the facade windows.

Installation of lighting using profilya PML-180 is very simple and requires no special skills



PC Cover : transparent ,diffuse ,milk optional

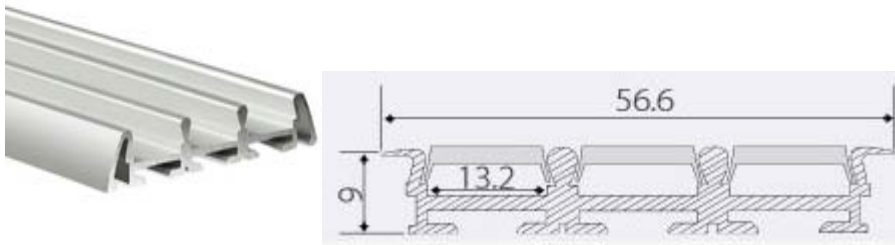


End Caps (pair: one with a hole for the cable, the second - the deaf)



(16) MS-P6009

Aluminum Pictures



Three-tier profile Recessed used to create intense lighting or general lighting. Scope furniture manufacturing, interior and exterior lighting and lighting production, advertising and much more.



Options:

- Screen (Transparent or milk)

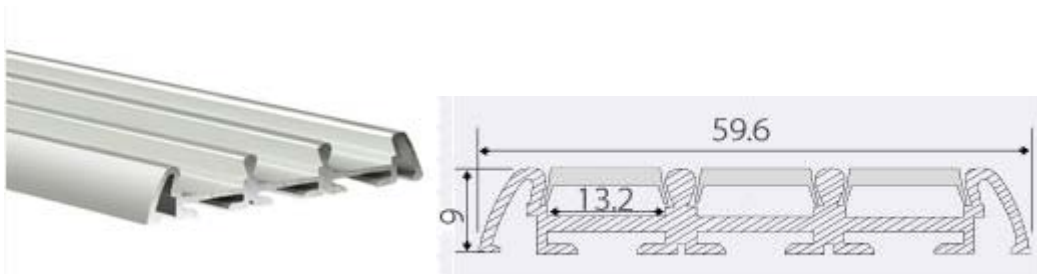


--End Caps (pair: one with a hole for the cable, the second - the deaf)



(17) MS-P5609

Aluminum Pictures



Three-tier profile Recessed used to create intense lighting or general lighting. Scope - furniture manufacturing, interior and exterior lighting and lighting production, advertising and much more.





Options:

--PC Cover : Transparent ,Diffuse or Milk Optional



--End Caps (pair: one with a hole for the cable, the second - the deaf)

